

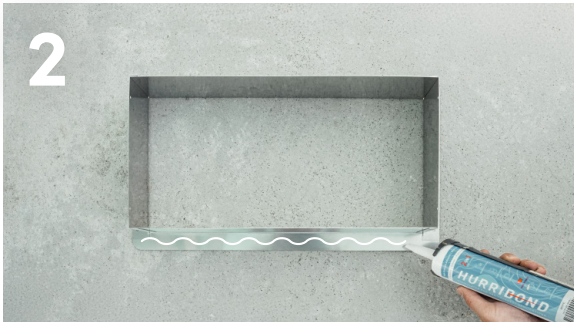
# INSTALLATION INSTRUCTIONS

MASONRY TRIM & SLEEVE



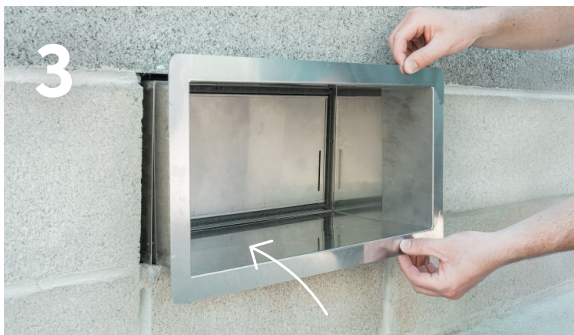
### Prepare Opening

See table to the right for measurements. Ensure the interior opening is clear of debris.



### Apply Sealant on Flange

Use Hurribond or an equivalent adhesive on all edges of the back side of the flange.



### Install into Interior Opening

Compress the frame to the wall for 1 minute.



### Check Flange Frame Placement

Ensure flange frame is level, flush with the wall, and firmly adhered.

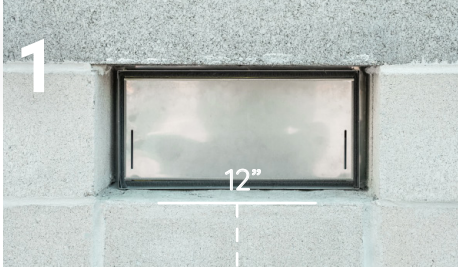
MODEL	DEPTH
1540-533	3"
1540-531-12	7" - 12.5"
1540-531-15	10" - 15.5"
1540-531-16	16" - 19"
1540-531-19.5	19" - 25"

This product comes in a stainless steel finish only

1540-11009A 07/23/2024

# INSTALLATION INSTRUCTIONS

TRIM & SLEEVE + FIRE DAMPER



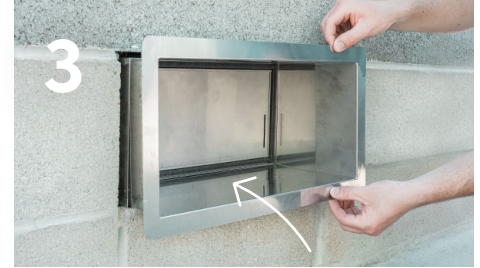
## Prepare Opening

Ensure smooth installation by clearing the interior opening of any debris.



## Apply Fire-Rated Sealant

Use a fire-rated adhesive on all edges of the back side of the flange.



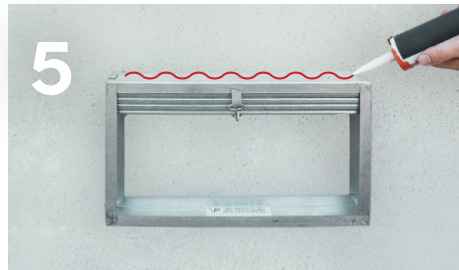
## Install into Interior Opening

Compress the frame to the wall for 1 minute.



## Check Flange Frame Placement

Make sure flange frame is level, flush with the wall, and firmly adhered.



## Apply Sealant on Fire Damper

Apply fire barrier along all 4 sides of the fire damper.



## Slide Fire Damper Into Frame

Gently insert fire damper into trim flange, making sure they are flush and level.



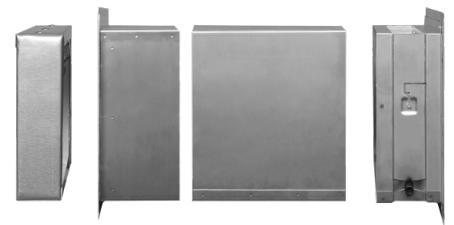
## Apply Sealant on Fire Damper

Additional sealant may be required to ensure the entire crevice is filled.



## Check Fire Damper Placement

Ensure fire damper and trim flange are level, flush with the wall, and firmly adhered.



**Minimum 8" wall depth required for flood vent, trim flange, and fire damper.**

Please consult with a local fire official for specific installation requirements. These are suggested installation steps.

1540-11010A 07/23/2024