

INSTALLATION INSTRUCTIONS

DUAL FUNCTION 1540-510



COLOR OPTIONS



WHITE



GRAY



BLACK



WHEAT



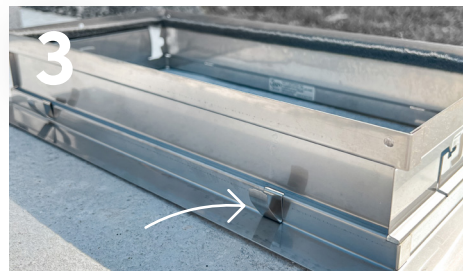
Prepare 16 1/4"W x 8 1/4"H Opening

Ensure the inside and outside are clear of debris. The vent opening must not exceed 12" above the highest adjacent grade.



Remove Door From Frame

With the vent flange facing you, rotate the bottom of the vent door outward and slide out of frame.



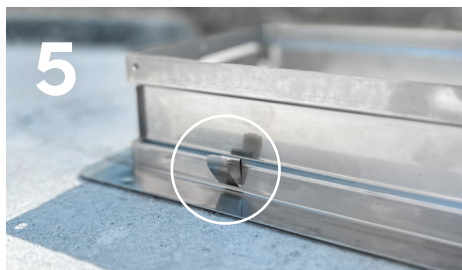
Insert Installation Clips Into Slots

There will be two slots on the top and two slots on the bottom of the frame.



Apply Sealant On Flange

Use HurriBond® or an equivalent adhesive on all edges of the back side of the vent flange.



Compress Bottom Spring Clips

On the outside of the frame, compress the 2 bottom clips to slip the frame into the opening. Afterwards, decompress.



Compress Top Spring Clips

Fully push the frame into the opening until it's flush with the wall. Make sure the vent sticker is on the bottom, facing up.



Check Frame Placement

Make sure vent frame is level and flush with wall.



Slide Door Back Into Frame

Grasp the bottom of the door with float pins facing out. Slide into frame and allow door to swing closed, until latched.



Insert 2 Security Clips

Place a security clip in the pivot pin track on left and right side of frame. Needle nose pliers may be needed.

TEST YOUR FLOOD DOOR

Please test and wash your vents at least twice a year. To test, insert a business card into both float slots.



MAKE VENT INSTALLS A BREEZE

HurriBond is a fast-curing, multi-purpose silicone sealant and adhesive. Comes in gray or white. 1 tube for every 5-6 vents.

