

# INSTALLATION INSTRUCTIONS

INSULATED 1540-520



TUTORIAL

## COLOR OPTIONS



WHITE



BLACK



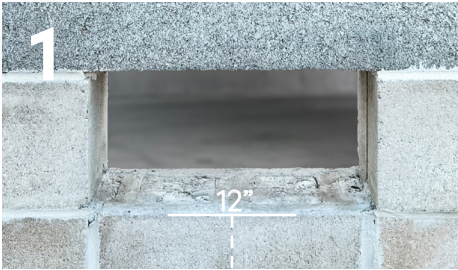
GRAY



WHEAT



Engineered Flood Vents



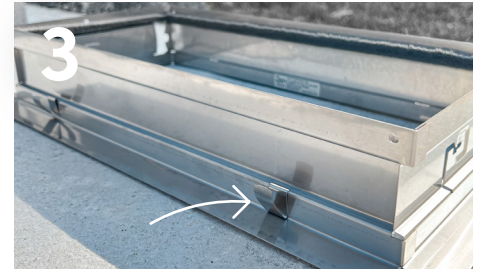
### Prepare 16 1/4" W x 8 1/4" H Opening

Ensure the inside and outside are clear of debris. The vent opening must not exceed 12" above the highest adjacent grade.



### Remove Door From Frame

With the vent flange facing you, rotate the bottom of the vent door outward and slide out of frame.



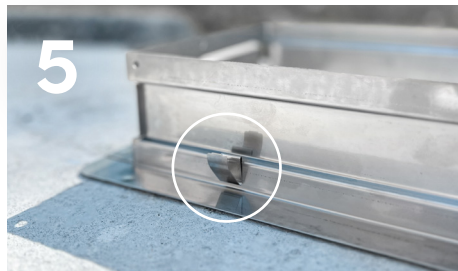
### Insert Installation Clips Into Slots

There will be two slots on the top and two slots on the bottom of the frame.



### Apply Sealant On Flange

Use Hurribond® or an equivalent adhesive on all edges of the back side of the vent flange.



### Compress Bottom Spring Clips

On the outside of the frame, compress the 2 bottom clips to slip the frame into the opening. Afterwards, decompress.



### Compress Top Spring Clips

Fully push the frame into the opening until it's flush with the wall. Make sure vent sticker is on the bottom, facing up.



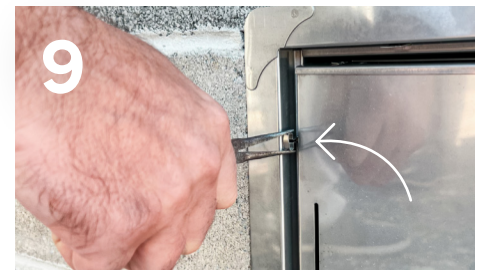
### Check Frame Placement

Make sure vent frame is level and flush with wall.



### Slide Door Back Into Frame

Grasp the bottom of the door with float pins facing out. Slide into frame and allow door to swing closed, until latched.



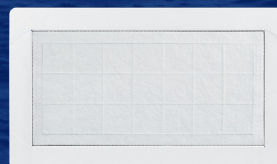
### Insert 2 Security Clips

Place a security clip in the pivot pin track on left and right side of frame. Needle nose pliers may be needed.



### TEST YOUR FLOOD DOOR

Please test and wash your vents at least twice a year. To test, insert a business card into both float slots.



### FINISH YOUR INTERIOR

Our Sealing Kit finishes and seals interior spaces while still letting debris + water flow during a flood.