

INSTALLATION INSTRUCTIONS

GARAGE DOOR FLOOD VENT 1540-574

COLOR OPTIONS

WHITE
GRAY

BLACK
WHEAT



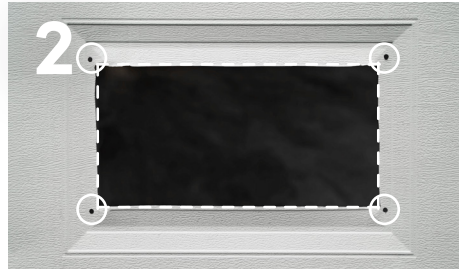
CONTENTS:

1 BACKPLATE
4 NUTS + 4 BOLTS
2 SECURITY CLIPS



Prepare 14.5"W x 8.5"H Opening

Using the backplate as a template, trace 4 holes onto the garage door. Ensure the opening bottom is no more than 12" above highest adjacent grade.



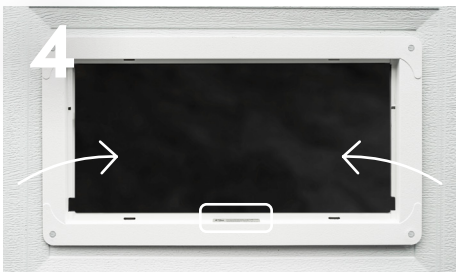
Cut Opening and Drill Holes

Ensure the holes are level so the vent and the backplate line up. Cut a clean opening and drill (4) 1/4" holes. Clean all loose or sharp metal burrs from the panel.



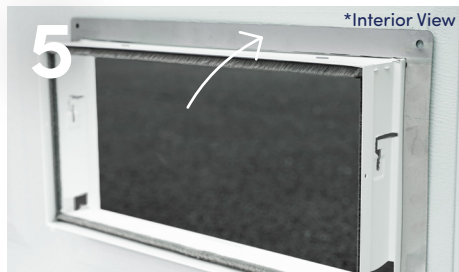
Remove Door From Frame

With the vent flange facing you, rotate the bottom of the door and pull outward, sliding the door out of the vent frame and place it to the side.



Place Frame in Garage Door

Slide frame into the front opening of the garage door with serial number sticker facing the bottom.



Install Backplate on the Back

Check to make sure both the front of the flange and the back of the vent are level when installing the backplate.



Secure With 4 Nuts and Bolts

Push bolt through the frame and backplate with the bolt head facing the exterior. Ensure the flange is flush with front panel.



Apply HurriBond

Create a watertight seal against the garage door using HurriBond adhesive around the backside of the flange.



Slide Door Back into Frame

Grasp the bottom of the door with float pins facing out. Slide into frame and allow door to swing closed, until latched.



Insert 2 security clips

Place a security clip in the pivot pin track on left and right side of frame. Needle nose pliers may be needed.

VENTS SHOULD NOT OPEN WITH GARAGE DOOR. VENTS ONLY OPEN DURING FLOODS.

TEST YOUR FLOOD DOOR

Please test and wash your vents at least twice a year. To test, insert a business card into both float slots.



MAKE VENT INSTALLS A BREEZE

HurriBond is a fast-curing, multi-purpose silicone sealant and adhesive. Comes in gray or white. 1 tube for every 5-6 vents.



FOR MORE INFORMATION CONTACT US 1 (877) 441-8368 | info@smartvent.com

smartvent.com

1540-11105 REV. A 03/11/2024