

INSTALLATION INSTRUCTIONS

INSULATED WOOD WALL 1540-570



TUTORIAL

COLOR OPTIONS



WHITE



BLACK



GRAY

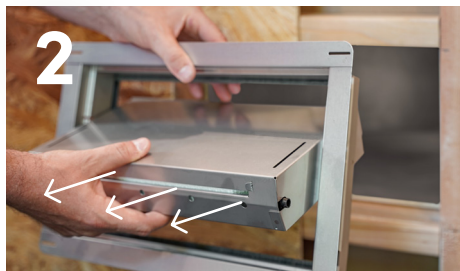


WHEAT



Prepare 14 1/2"W x 8 3/4"H Opening

Ensure the inside and outside are clear of debris. The vent opening must not exceed 12" above the highest adjacent grade.



Remove Door From Frame

With the vent flange facing you, rotate the bottom of the vent door outward and slide out of frame.



Apply Sealant On Flange

Use HurriBond® or an equivalent adhesive on all edges of the back side of the vent flange.



Insert Flange Into Opening

Fully push the flange into the opening until it's flush with the wall. Make sure vent sticker is on the bottom, facing up.



Check Frame Placement

Make sure the vent frame is level and flush with the wall.



Fasten Stainless Steel Screws

Use stainless steel screws (not included) in all 4 slots and fasten to studs. Don't over tighten.



Slide Door Back Into Frame

Grasp the bottom of the door with float pins facing out. Slide into frame and allow door to swing closed, until latched.



Insert 2 Security Clips

Place a security clip in the pivot pin track on left and right side of frame. Needle nose pliers may be needed.

Applications may vary depending on exterior finish

TEST YOUR FLOOD DOOR

Please test and wash your vents at least twice a year. To test, insert a business card into both float slots.



MAKE VENT INSTALLS A BREEZE

HurriBond is a fast-curing, multi-purpose silicone sealant and adhesive. Comes in gray or white. 1 tube for every 5-6 vents.

